

Sponsored Program Summary Unaudited FY16 Activities October, 2016

David Reed

Vice President for Research



**Michigan
Technological**
University

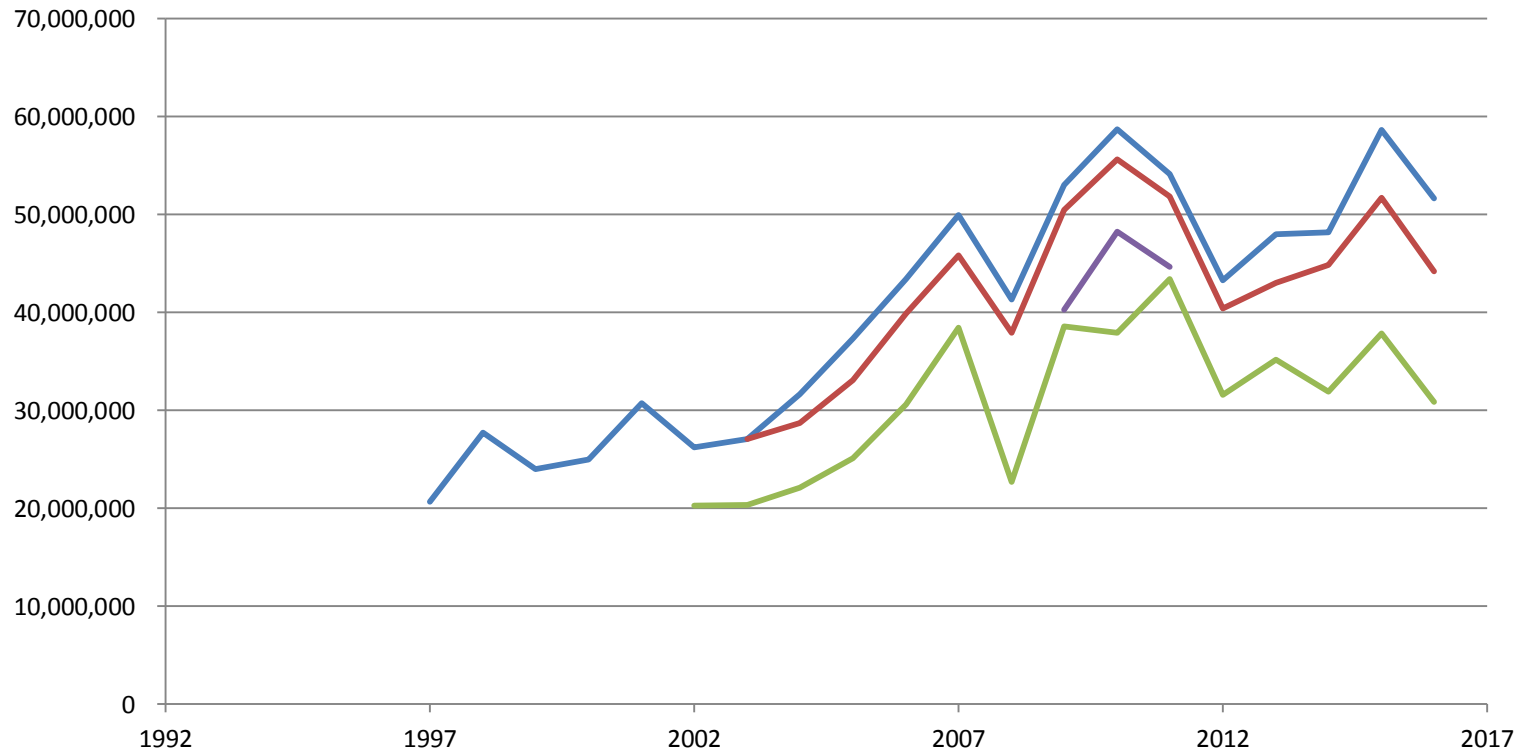
Outline

- Sponsored Awards, Unaudited FY16
- Research Expenditures, Unaudited FY16
- Intellectual Property/Commercialization, Unaudited FY16
- Corporate Sponsorship, Unaudited FY16



**Michigan
Technological**
University

Sponsored Awards, Unaudited FY16



— Total — Tot-Gifts — Federal — ARRA



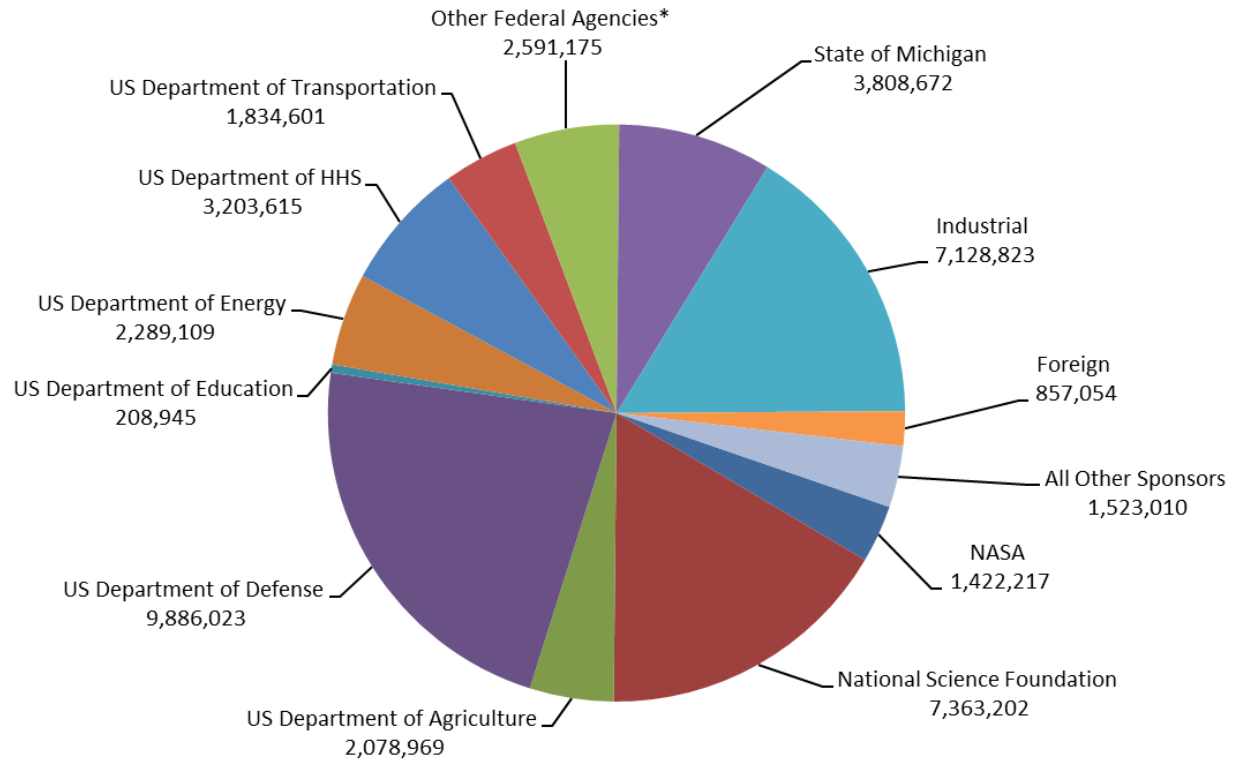
**Michigan
Technological
University**

Sponsored Awards, Unaudited FY16

Sponsored Awards
 Fiscal Year 2016
 4th Quarter
 Ended June, 30 2016
 TOTAL: \$51,661,818

Pre-Proposals Submitted
(excluded from Proposals Submitted figures below)

FYTD 2015: 51
 FYTD 2016: 63



**Michigan
 Technological
 University**

Sponsored Awards, Unaudited FY16

Sponsor	Proposals Submitted		Awards Received		Awards Received (\$)		Variance \$	Variance %
	FY '16 as of 06/30	FY '15 as of 06/30	FY '16 as of 06/30	FY '15 as of 06/30	FY '16 as of 06/30	FY '15 as of 06/30		
NASA	71	73	29	42	1,422,217	2,422,291	-1,000,074	-41.3%
National Science Foundation	186	216	65	89	7,363,202	12,308,810	-4,945,608	-40.2%
US Department of Agriculture	48	55	43	78	2,078,969	2,842,385	-763,416	-26.9%
US Department of Defense	72	83	69	49	9,886,023	12,592,868	-2,706,845	-21.5%
US Department of Education	3	1	2	1	208,945	51,224	157,721	307.9%
US Department of Energy	40	36	20	13	2,289,109	793,904	1,495,205	188.3%
US Department of HHS	45	49	15	14	3,203,615	2,439,403	764,212	31.3%
US Department of Transportation	23	27	20	22	1,834,601	2,817,164	-982,563	-34.9%
Other Federal Agencies*	55	52	29	26	2,591,175	1,606,449	984,726	61.3%
Federal Agency Total	543	592	292	334	30,877,856	37,874,498	-6,996,642	-18.5%
State of Michigan	41	37	28	35	3,808,672	3,065,035	743,637	24.3%
Industrial	181	204	188	181	7,128,823	8,776,896	-1,648,073	-18.8%
Foreign	19	27	16	15	857,054	1,030,914	-173,860	-16.9%
All Other Sponsors	72	72	31	39	1,523,010	973,760	549,250	56.4%
Subtotal	856	932	555	604	44,195,415	51,721,103	-7,525,688	-14.6%
Gifts**			334	333	7,439,801	6,923,814	515,987	7.5%
Crowd Funding			27	29	26,602	35,102	-8,500	-24.2%
Grand Total	856	932	916	966	\$51,661,818	\$58,680,019	-\$7,018,201	-12.0%

*Federal Mediation and Conciliation Service, National Endowments for the Arts & Humanities, National Security Agency, National Transportation Safety Board, Office of the Director of National Intelligence, US Agency for International Development, US Dept of Commerce, US Dept of Labor, US Dept of State, US Dept of the Interior, US Environmental Protection Agency, US Small Business Administration

**Gifts represent non-contractual funding from corporations, foundations, associations and societies in support of academic programs, scholarships/fellowships, student design & enterprise, research, youth programs and special programs.



**Michigan
Technological
University**

Research Expenditures, Unaudited FY16

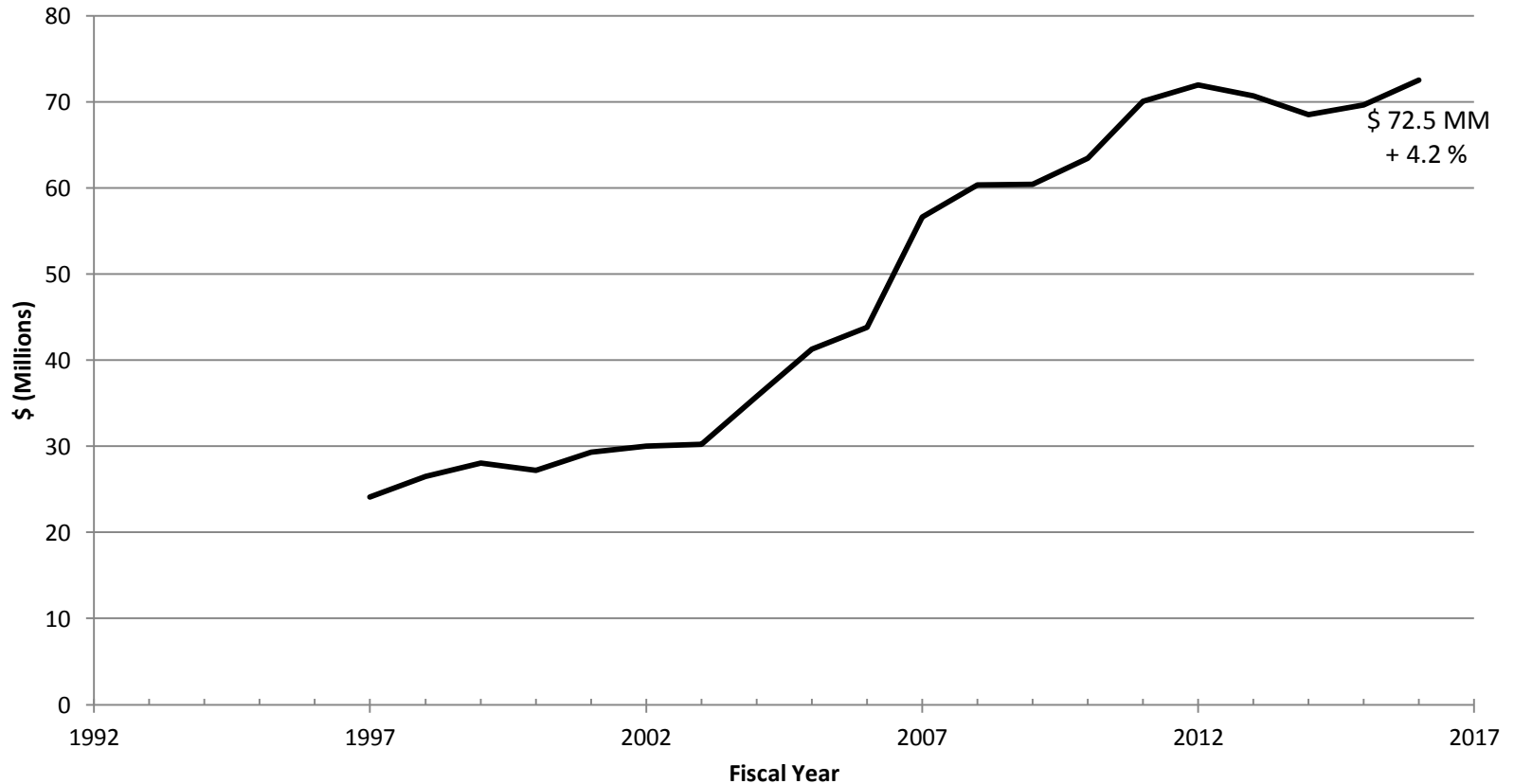
College/School/Division	FINAL FY2016	FINAL FY2015	Variance	%
Administration*	2,652,771	2,368,505	284,266	12.0%
College of Engineering	28,885,027	27,048,969	1,836,058	6.8%
College of Science & Arts	16,825,212	15,361,434	1,463,778	9.5%
Pavlis Honors College	284,189	356,221	(72,032)	-20.2%
Keweenaw Research Center (KRC)	7,076,343	6,870,541	205,802	3.0%
Michigan Tech Research Institute (MTRI)	8,912,958	9,698,319	(785,361)	-8.1%
School of Business & Economics	1,630,253	1,623,653	6,600	0.4%
School of Forest Resources & Environmental Science	5,508,378	5,771,264	(262,886)	-4.6%
School of Technology	760,637	507,811	252,826	49.8%
Total	72,535,768	69,606,717	2,929,051	4.2%

*Includes the Vice Presidents, Provost, CIO, Exec Director Financial Services & Operations and others who report to a VP, Provost or the President. Except for the research institutes that report to the VPR.



**Michigan
Technological
University**

Research Expenditures, Unaudited FY16



**Michigan
Technological
University**

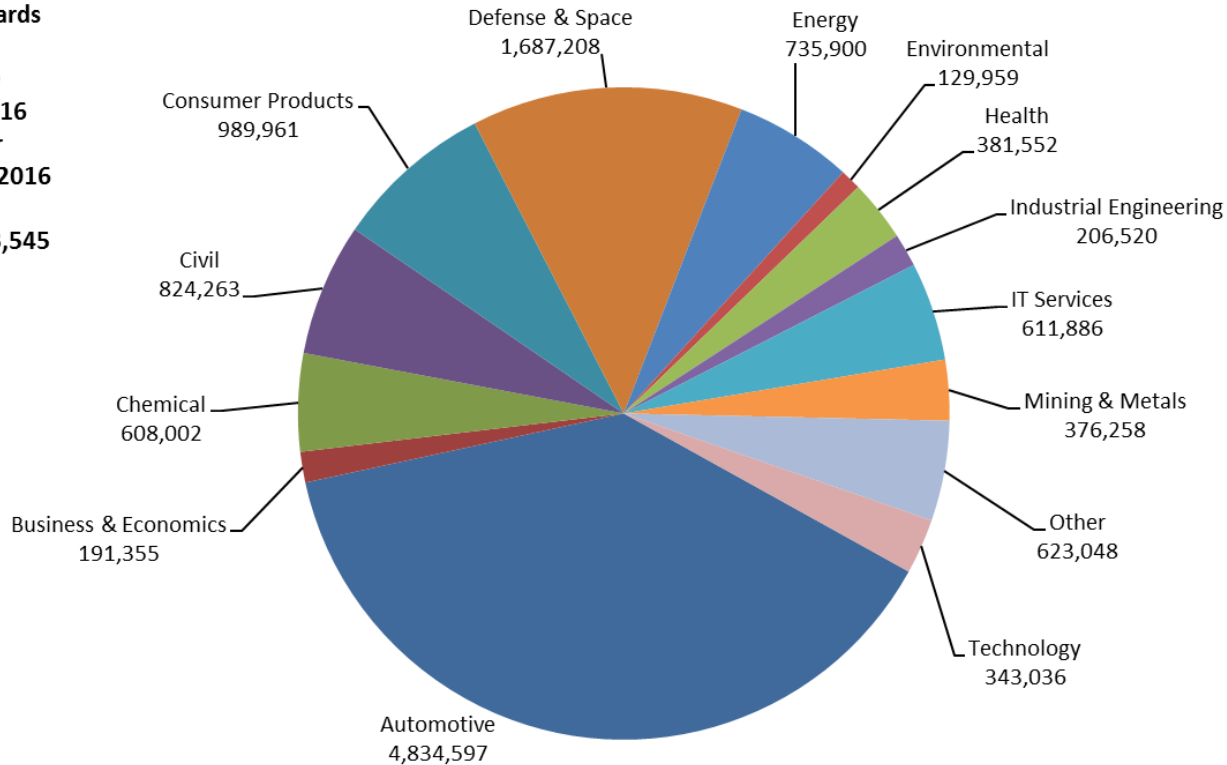
Intellectual Property, Unaudited FY16

	2016	2015	+/- %
Disclosures Received ²	32	33	- 3%
Nondisclosure Agreements	111	116	- 4%
Patents Filed or Issued ²	17	17	0%
License Agreements	20	11	82%
Gross Royalties ²	301,120	255,051	18%



Corporate Sponsorship, Unaudited F16

Sponsored Awards
-Industry-
COMBINED
Fiscal Year 2016
4th Quarter
Ended June 30, 2016
TOTAL: \$12,543,545



**Michigan
Technological
University**



**Michigan
Technological**
University