

# Sponsored Program Summary

## 1st Quarter FY17

### December, 2016

David Reed

Vice President for Research



**Michigan  
Technological**  
University

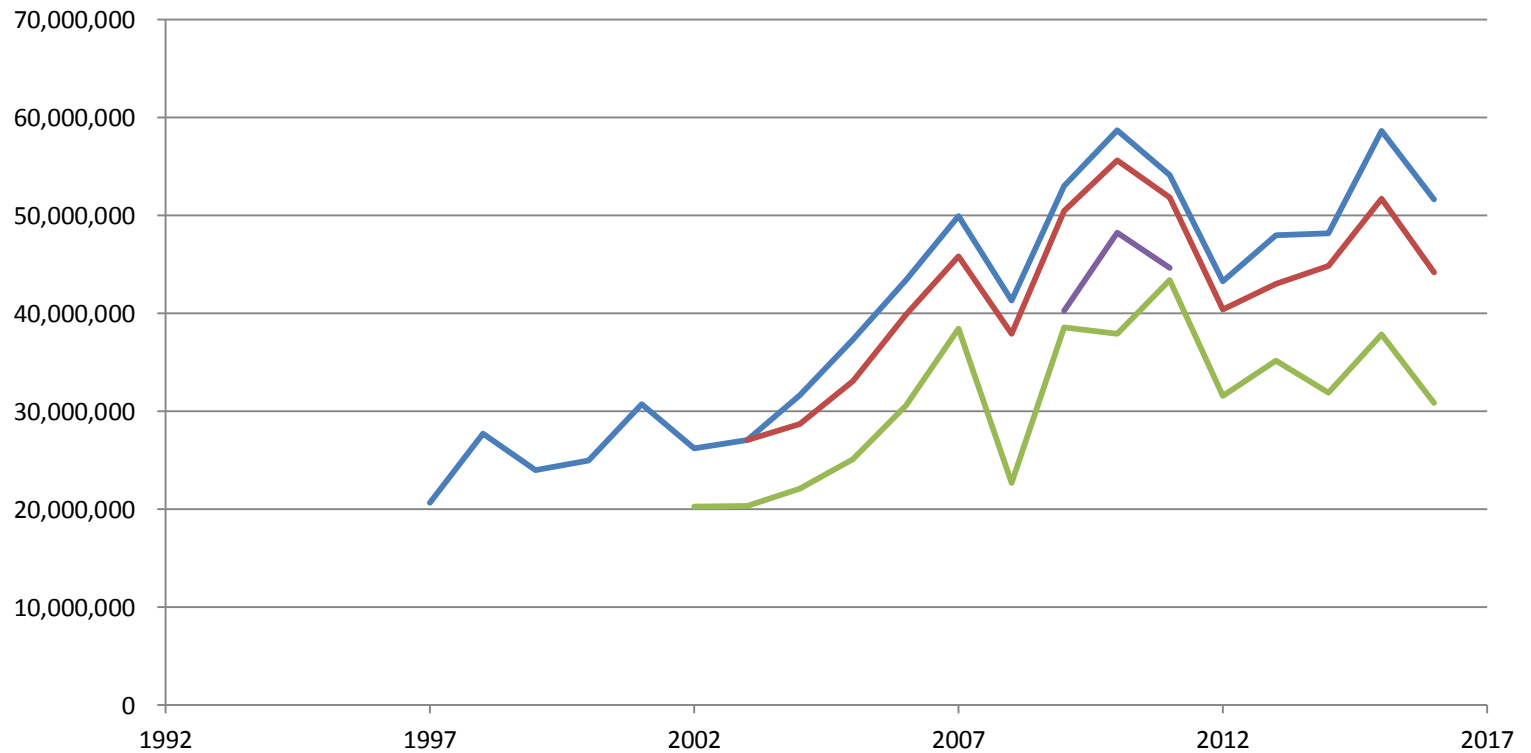
# Outline

- Sponsored Awards, 1<sup>st</sup> Quarter FY17
- Research Expenditures, 1<sup>st</sup> Quarter FY17
- Intellectual Property/Commercialization, 1<sup>st</sup> Quarter FY17
- Corporate Sponsorship, 1<sup>st</sup> Quarter FY17
- Federal Funding Trends
- MTRI 10<sup>th</sup> Anniversary



**Michigan  
Technological**  
University

# Sponsored Awards, Unaudited FY16



— Total — Tot-Gifts — Federal — ARRA



**Michigan  
Technological  
University**

# Sponsored Awards, 1<sup>st</sup> Quarter FY17

Sponsor	Proposals Submitted		Awards Received		Awards Received (\$)		Variance \$	Variance %
	FY '17 as of 09/30	FY '16 as of 09/30	FY '17 as of 09/30	FY '16 as of 09/30	FY '17 as of 09/30	FY '16 as of 09/30		
NASA	13	2	14	4	1,083,828	339,117	744,711	219.6%
National Science Foundation	33	43	23	31	4,341,502	4,121,183	220,319	5.3%
US Department of Agriculture	35	25	22	10	1,996,085	989,427	1,006,658	101.7%
US Department of Defense	25	17	27	17	2,961,704	2,657,682	304,022	11.4%
US Department of Education	-	1	1	1	59,720	92,155	-32,435	-35.2%
US Department of Energy	7	11	6	9	1,314,156	540,689	773,467	143.1%
US Department of HHS	3	3	5	4	1,168,077	1,015,049	153,028	15.1%
US Department of Transportation	3	5	7	4	929,629	273,535	656,094	239.9%
Other Federal Agencies*	12	20	10	8	961,216	552,301	408,915	74.0%
<b>Federal Agency Total</b>	<b>131</b>	<b>127</b>	<b>115</b>	<b>88</b>	<b>14,815,917</b>	<b>10,581,138</b>	<b>4,234,779</b>	<b>40.0%</b>
State of Michigan	12	11	6	5	441,099	459,673	-18,574	-4.0%
Industrial	66	68	41	50	488,219	1,454,598	-966,379	-66.4%
Foreign	4	7	5	5	585,296	184,516	400,780	217.2%
All Other Sponsors	21	15	16	7	316,761	189,152	127,609	67.5%
<b>Subtotal</b>	<b>234</b>	<b>228</b>	<b>183</b>	<b>153</b>	<b>16,647,292</b>	<b>12,869,077</b>	<b>3,778,215</b>	<b>29.4%</b>
Gifts**	N/A	N/A	76	77	758,417	637,343	121,074	19.0%
Crowd Funding	N/A	N/A	3	7	2,210	6,378	-4,168	-65.4%
<b>Grand Total</b>	<b>234</b>	<b>228</b>	<b>259</b>	<b>237</b>	<b>17,407,919</b>	<b>13,512,798</b>	<b>\$3,895,121</b>	<b>28.8%</b>

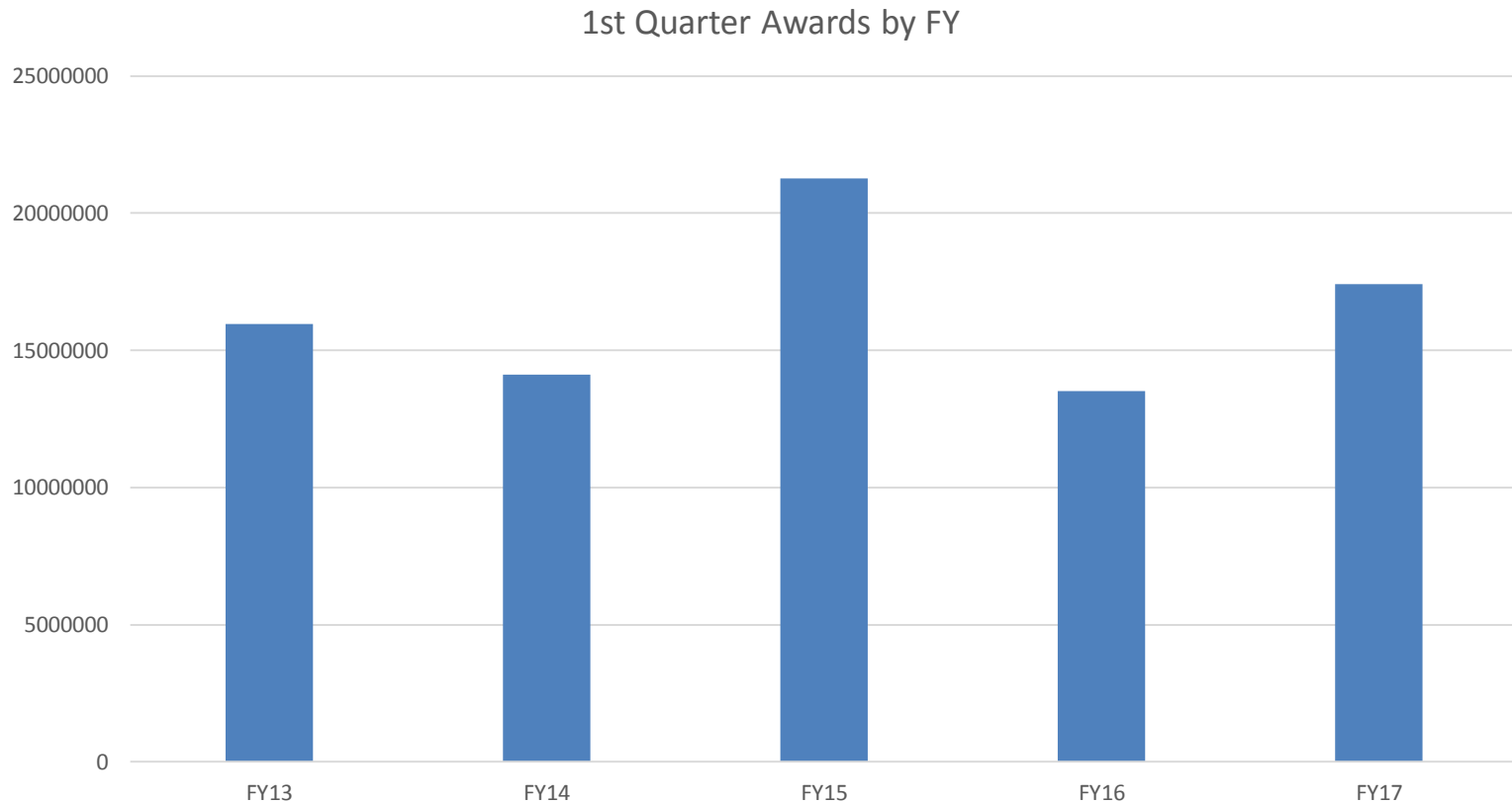
\* US Dept of the Interior, US Dept of Commerce, National Endowments for the Arts & Humanities, US Environmental Protection Agency, US Dept of Labor

\*\*Gifts represent non-contractual funding from corporations, foundations, associations and societies in support of academic programs, scholarships/fellowships, student design & enterprise, research, youth programs and special programs.



**Michigan  
Technological  
University**

# Sponsored Awards, 1<sup>st</sup> Quarter FY17



**Michigan  
Technological  
University**

# Research Expenditures, 1<sup>st</sup> Quarter FY17

**Michigan Technological University**  
**Total Research Expenditures by College/School/Division**  
**Fiscal Year 2017 & 2016**  
**As of September 30, 2016 and September 30, 2015**

<b>College/School/Division</b>	<b>FY2017</b>	<b>FY2016</b>	<b>Variance</b>	<b>%</b>
Administration*	1,269,691	2,285,243	(1,015,552)	-44.4%
College of Engineering	5,103,130	4,679,646	423,484	9.0%
College of Science & Arts	3,133,304	2,762,858	370,446	13.4%
Great Lakes Research Center	24,541	-	24,541	-
Pavlis Honors College	46,513	49,352	(2,839)	-5.8%
Keweenaw Research Center (KRC)	1,362,642	1,392,772	(30,130)	-2.2%
Michigan Tech Research Institute (MTRI)	1,882,565	1,956,154	(73,589)	-3.8%
School of Business & Economics	245,940	173,151	72,789	42.0%
School of Forest Resources & Environmental Science	1,259,145	956,705	302,440	31.6%
School of Technology	133,658	132,988	670	0.5%
<b>Total</b>	<b>14,461,129</b>	<b>14,388,869</b>	<b>72,260</b>	<b>0.5%</b>

\*Includes the Vice Presidents, Provost, CIO, Exec Director Financial Services & Operations and others who report to a VP, Provost or the President. Except for the research institutes that report to the VPR.



**Michigan  
Technological  
University**

# Intellectual Property, 1<sup>st</sup> Quarter FY17

	2017	2016	+/- %
Disclosures Received	5	4	25 %
Nondisclosure Agreements	27	32	- 16 %
Patents Filed or Issued	2	2	0 %
License Agreements	5	4	25 %
Gross Royalties	143,342	95,481	50 %

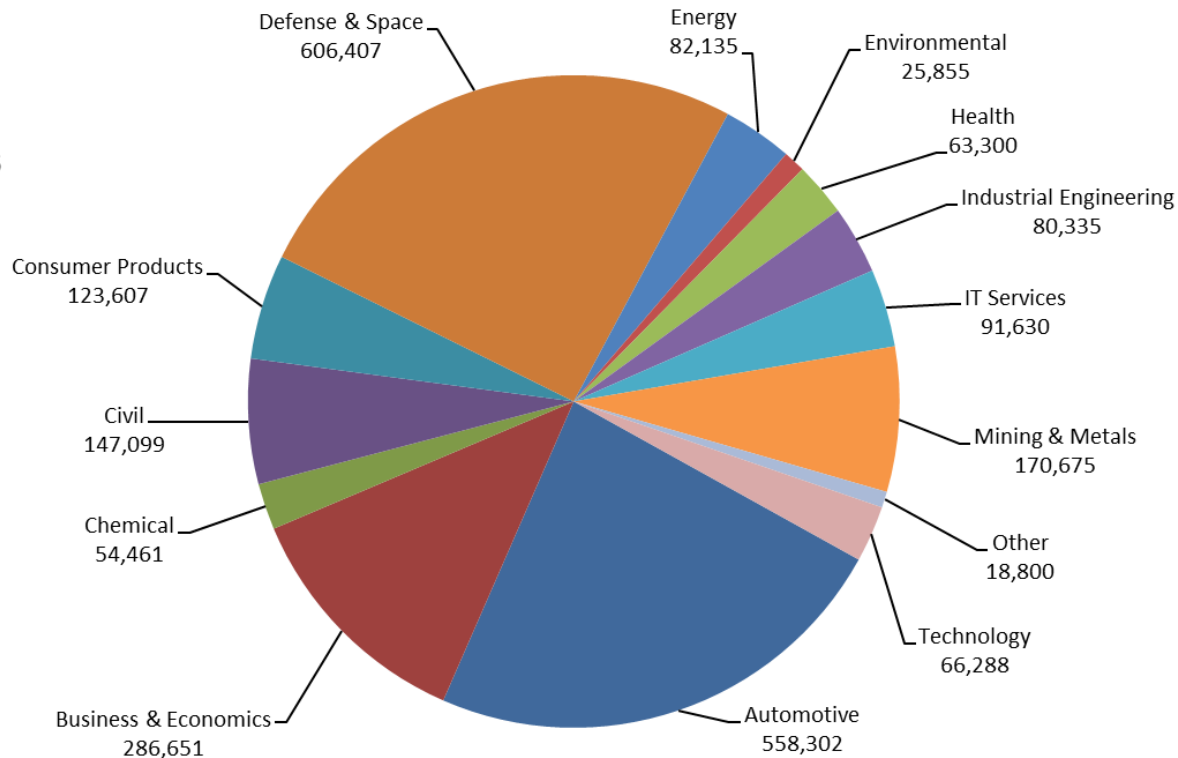


**Michigan  
Technological**  
University

# Corporate Sponsorship, 1<sup>st</sup> Quarter FY17

Sponsored Awards  
-Industry-  
COMBINED  
Fiscal Year 2017  
1st Quarter  
Ended Sept 30, 2016

TOTAL: \$2,375,545



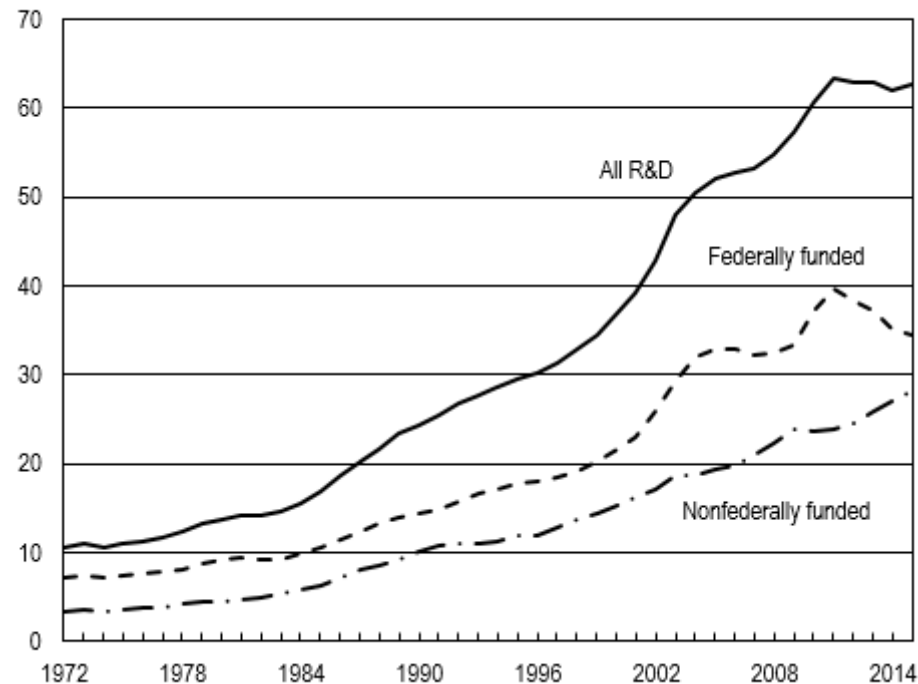
**Michigan  
Technological  
University**



# National R&D Expenditures

(Source: National Science Foundation)

Billions of constant 2009 dollars



**Michigan  
Technological  
University**

# National R&D Expenditures

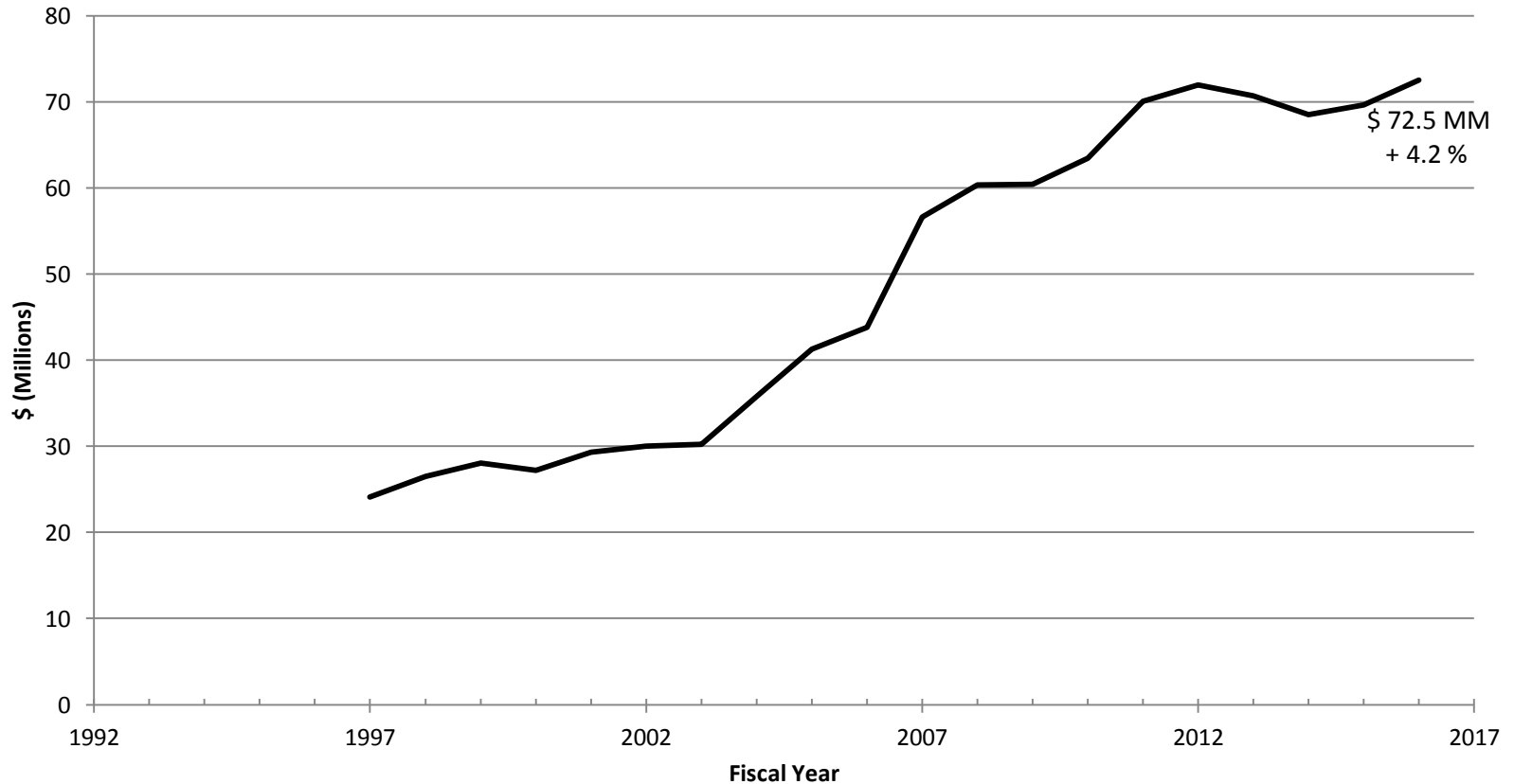
(Source: National Science Foundation)

- Federal funding dropped from 62.5% of total higher ed R&D in FY11 to 55.2% in FY15
- Only 3 federal agencies reported increases – Defense, NASA, and USDA; all others reported decreases.
- Medical science (\$21.3 B), biological science (\$11.7 B), and engineering (\$11.1 B) together account for 64.3 % of total higher ed R&D



Michigan  
Technological  
University

# Research Expenditures, Unaudited FY16



**Michigan  
Technological  
University**

# National Research Rankings FY15

- FY16 was an all time high for research expenditures at \$ 72.5 MM and our total research expenditures increased to \$ 69.6 MM in FY15 from \$ 68.5 MM in FY14, with an overall ranking of 164<sup>th</sup> among all institutions and 116<sup>th</sup> among public institutions.
- NSF reports research expenditures by discipline, so MTRI, KRC, and GLRC are combined with appropriate academic units for reporting purposes, and some academic units are split depending on disciplinary nature of the work.



**Michigan  
Technological**  
University

# National Research Rankings FY15

- One highlight – Michigan Tech is the number 1 ranked Environmental Science research institution in the state with a national ranking of 53<sup>rd</sup>, followed by UMich at 57<sup>th</sup>, GVSU at 135<sup>th</sup>, and MSU at 146<sup>th</sup>
- Michigan Tech is number 1 in the state in both Atmospheric Science (39<sup>th</sup> nationally) and Oceanography (53<sup>rd</sup> nationally)



**Michigan  
Technological**  
University

# MTRI 10<sup>th</sup> Anniversary

- MTRI joined Michigan Tech on October 1, 2006
- At that time they had 24 regular employees; today there are 60
- Cumulatively, over the 10 years MTRI has had over \$80 million in research expenditures



**Michigan  
Technological**  
University

# MTRI 10<sup>th</sup> Anniversary



**Michigan  
Technological  
University**

# MTRI 10<sup>th</sup> Anniversary



**Michigan  
Technological  
University**





**Michigan  
Technological**  
University